

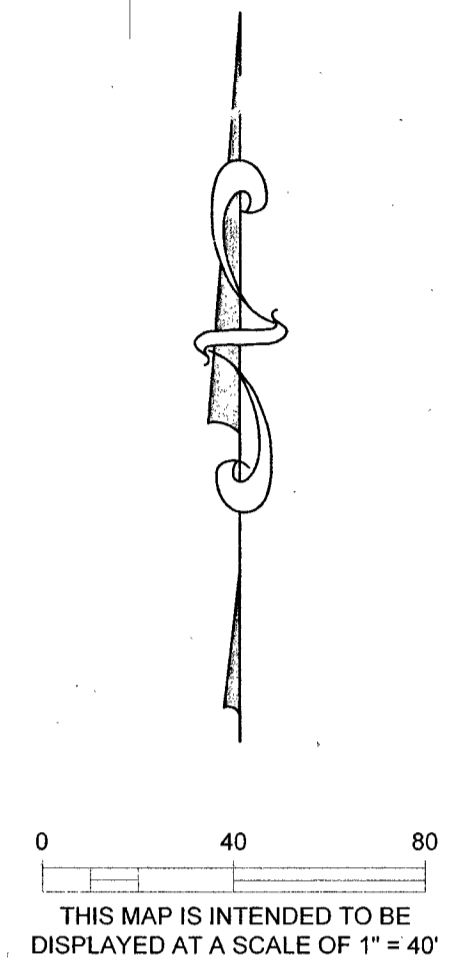
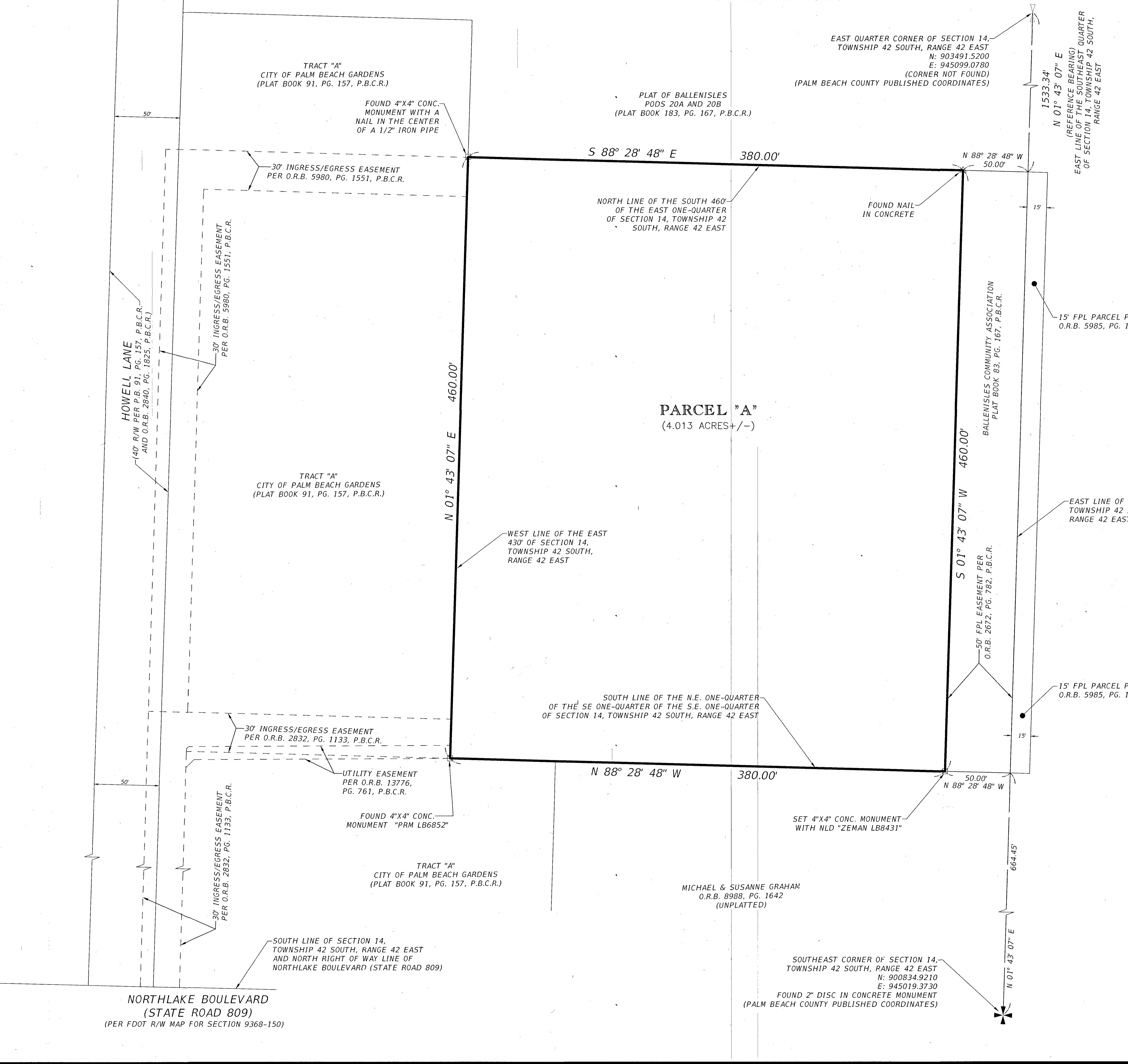
# SQUARELAKE SUBSTATION PLAT

A PORTION OF THE SOUTHEAST QUARTER OF SECTION 14, TOWNSHIP 42 SOUTH, RANGE 42 EAST  
CITY OF PALM BEACH GARDENS, PALM BEACH COUNTY, FLORIDA

JANUARY 2024

104

SHEET 2 OF 2



- ABBREVIATIONS:**
- C.M. CONCRETE MONUMENT
  - CONC. CONCRETE
  - F.B. FIELD BOOK
  - FD. FOUND
  - FPL FLORIDA POWER & LIGHT
  - IRC IRON ROD WITH CAP
  - LB LICENSED BUSINESS
  - N/A NOT APPLICABLE
  - N.E. NORTHEAST
  - NLD NAIL WITH DISC
  - NO. NUMBER
  - O.R.B. OFFICIAL RECORDS BOOK
  - P.B. PLAT BOOK
  - P.B.C.R. PALM BEACH COUNTY RECORDS
  - PG. PAGE
  - P.R.M. PERMANENT REFERENCE MONUMENT
  - P.S.M. PROFESSIONAL SURVEYOR AND MAPPER
  - R/W RIGHT OF WAY
  - S.E. SOUTHEAST
  - TYP. TYPICAL



FIELD BY	KR	PROJECT NO.	21046.01
FIELD BOOK(S)	21-2,21-4,23-6	SCALE	1"=40'
PAGE(S)	VARIOUS	DATE OF LAST FIELDWORK	5/09/23
DRAWN BY	MR	DATE OF MAP	01/31/24
CHECKED BY	LP		

3970 RGA BLVD, SUITE #7750  
PALM BEACH GARDENS, FL 33410 - LB 8431